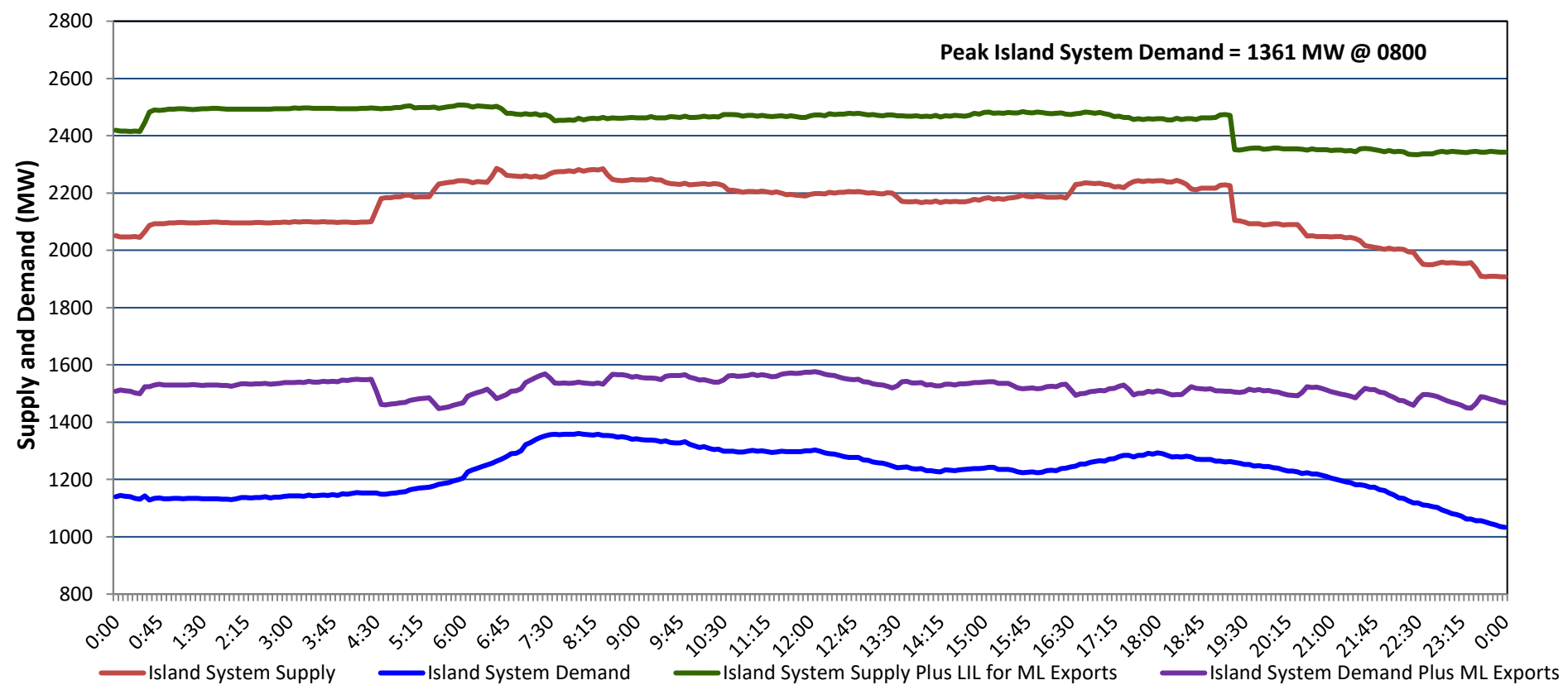


Newfoundland Labrador Hydro (NLH) Supply and Demand Status Report Filed Wednesday, February 26, 2025

Section 1 Island Interconnected System - Supply, Demand & Exports Actual 24 Hour System Performance For Tuesday, February 25, 2025



Island Supply Notes For February 25, 2025 ¹

A As of 1348 hours, February 19, 2025, Holyrood Unit 1 available at 105 MW due to forced derating (170 MW).

B At 1917 hours, February 25, 2025, Holyrood Gas Turbine unavailable due to forced outage (123.5 MW).

Section 2 Island Interconnected System - Supply, Demand & Outlook

Wed, Feb 26, 2025	Island System Outlook ²	Seven-Day Forecast	Island System Daily Peak Demand (MW)	
			Forecast ⁸	Adjusted ⁶
Island System Supply: ⁴ NLH Island Generation: ^{3,7} NLH Island Power Purchases: ⁵ NP and CBPP Owned Generation: LIL/ML Net Imports to Island: ⁹	1,950 MW 1,505 MW 120 MW 210 MW 115 MW	Wednesday, February 26, 2025	1,260	1,155
		Thursday, February 27, 2025	1,335	1,230
		Friday, February 28, 2025	1,230	1,126
		Saturday, March 1, 2025	1,280	1,175
		Sunday, March 2, 2025	1,320	1,215
		Monday, March 3, 2025	1,475	1,368
		Tuesday, March 4, 2025	1,550	1,442
7-Day Island Peak Demand Forecast:	1,550 MW			

Island Supply Notes For February 26, 2025

- Notes:
1. Generation outages for running and corrective maintenance are included. These are not unusual for power system operations. They generally do not impact customer supply. Hydro schedules outages to system equipment whenever possible to coincide with periods when customer demands are low and sufficient supply reserves are available. However, from time to time equipment outages are necessary and reserves may be impacted.
 2. As of 0800 Hours.
 3. Gross continuous unit output.
 4. Gross output from all Island sources (including Note 3).
 5. NLH Island Power Purchases include: ML Imports, Exploits Generation, Rattle Brook, Star Lake, Wind Generation and capacity assistance (when applicable).
 6. Adjusted for interruptible load and the impact of voltage reduction when applicable.
 7. Due to limitations inherent in the design of combustion turbines, the output of combustion turbines may be reduced in the event that ambient temperatures exceed the threshold required for full rated output. This threshold is dependent on the design of each turbine.
 8. Does not include ML Exports.
 9. LIL Import sunk in the Island System. Actual LIL flows will be restricted by various system conditions including, but not limited to, Island Load, ML Exports and Avalon Unit status.

Section 3 Island Peak Demand and Exports Information Previous Day Actual Peak and Current Day Forecast Peak

Tue, Feb 25, 2025	Island Peak Demand ¹⁰	8:00	1,361 MW
	Exports at Peak		179 MW
	LIL Net Imports to Island		5,601 MWh
Wed, Feb 26, 2025	Forecast Island Peak Demand		1,260 MW

Notes: 10. Island Demand is supplied by NLH generation and purchases, LIL Imports plus generation owned and operated by Newfoundland Power and Corner Brook Pulp & Paper (Deer Lake Power, DLP).